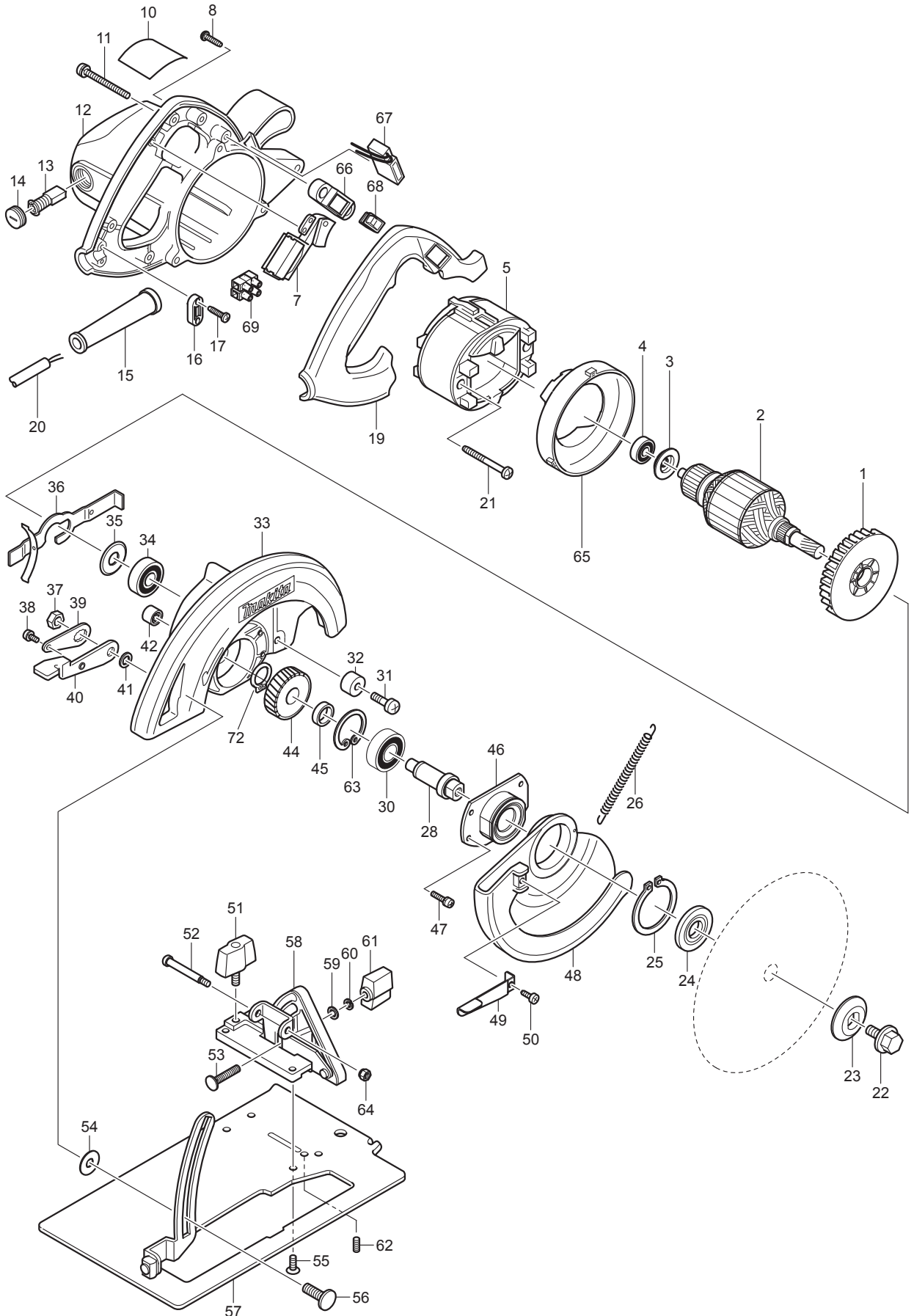




06 - 2011
5007F / 5007FK (MKC)
(Made in China)

7-1/4" CRCLR SAW W/LIGHT AC/DC



Item No	Type	Ref	Part No	Description	Qty	Unit
001			240003-4	FAN 80	1	PC.
002			510057-8	ARMATURE ASS'Y 115V	1	PC.
		INC.		INC. 1,3,4,34,35		
003			681625-5	INSULATION WASHER	1	PC.
004	2		210005-4	BALL BEARING 608DDW	1	PC.
005	2		596396-0	* FIELD ASS'Y 115V	1	PC.
		INC.	654020-2	* RING TERMINAL	2	PC.
		INC.	654502-4	* CONNECTOR P-2	2	PC.
007			651172-0	SWITCH TG933TN-1	1	PC.
008			265995-6	TAPPING SCREW 4X18	4	PC.
010			853564-1	NAME PLATE 5007F	1	PC.
011			911273-9	PAN HEAD SCREW M5X50	3	PC.
012	1		152989-9	MOTOR HOUSING COMPLETE	1	PC.
		INC.	643653-8	BRUSH HOLDER 6.5-13.5	2	PC.
	2		142466-9	MOTOR HOUSING COMPLETE	1	PC.
		INC.	643653-8	BRUSH HOLDER 6.5-13.5	2	PC.
	3		141S45-4	MOTOR HOUSING COMPLETE	1	PC.
		INC.	643653-8	BRUSH HOLDER 6.5-13.5	2	PC.
013			194986-9	CARBON BRUSH CB-154 2PC/SET W/ ORIGIN	1	SET
014			643650-4	BRUSH HOLDER CAP 6.5-13.5	2	PC.
015	2		682574-9	* CORD GUARD 10-90	1	PC.
016	2		687124-5	STRAIN RELIEF	1	PC.
017			265995-6	TAPPING SCREW 4X18	2	PC.
019	2		454973-3	* HANDLE COVER	1	PC.
020			664463-0	CORD W/PLUG 2P-14-2.5M, SJ	1	PC.
021			266046-8	TAPPING SCREW 5X50	2	PC.
022			251644-1	HEX. FLANGE HEAD BOLT M8X20	1	PC.
023			224275-9	OUTER FLANGE 40	1	PC.
024			224151-7	INNER FLANGE 40	1	PC.
025			961201-4	RETAINING RING S-42	1	PC.
026	2		231888-9	* TENSION SPRING 4	1	PC.
028			324256-4	SPINDLE	1	PC.
030			211206-7	BALL BEARING 6202LLB	1	PC.
031			251247-1	+ PAN HEAD SCREW M6X20	1	PC.
032			262502-6	RUBBER SLEEVE 6	1	PC.
033	3		140H40-5	* BLADE CASE COMPLETE	1	PC.
		INC.	213459-4	* O RING 32	1	PC.
		INC.		* Item No. 42		
034			211106-1	BALL BEARING 6201LLB	1	PC.
035			213102-5	DUST SEAL 12	1	PC.
036			163113-9	SPINDLE LOCK	1	PC.
037			931402-8	HEX. NUT M8	1	PC.
038			911106-8	PAN HEAD SCREW M4X8	1	PC.
039			341415-5	LOCK PLATE	1	PC.
040			341416-3	LEVER PLATE	1	PC.
041			941201-0	FLAT WASHER 8	1	PC.
042			212052-1	NEEDLE BEARING 1010	1	PC.
044			226532-1	HELICAL GEAR 39	1	PC.
045			257064-7	RING 15	1	PC.
046			316700-5	BEARING BOX	1	PC.
047			911126-2	PAN HEAD SCREW M4X16	4	PC.
048			317436-9	SAFETY COVER	1	PC.
049			341417-1	LEVER	1	PC.
050			266026-4	TAPPING SCREW BIND CT 4X12	1	PC.
051			251858-2	SCREW M6X15	1	PC.
052			265075-8	+ PAN HEAD SCREW M5	1	PC.
053			251920-3	CAP SQUARE NECK BOLT M6X30	1	PC.

Item No	Type	Ref	Part No	Description	Qty	Unit
054	2		267238-2	FLAT WASHER 12	1	PC.
055			912212-2	COUNTERSUNK HEAD SCREW M5X12	4	PC.
056			266249-4	CAP SQUARE NECK BOLT M8X24	1	PC.
057			163378-3	BASE	1	PC.
058			163248-6	ANGULAR PLATE	1	PC.
059			941151-9	FLAT WASHER 6	1	PC.
060	4		253428-3	SPRING WASHER 6	1	PC.
061			252624-0	WING NUT M6	1	PC.
062			266213-5	H.S.SET SCREW(FLAT POINT)M5X12	1	PC.
063			962153-2	RETAINING RING R-35	1	PC.
064			252103-8	HEX. LOCK NUT M5-8	1	PC.
065			417711-4	BUFFLE PLATE	1	PC.
067	2		631709-9	* LIGHT CIRCUIT	1	PC.
068			651514-8	* SWITCH SLE6A (Removed after Feb 2014 production)	1	PC.
069			654531-7	TERMINAL BLOCK 2P	1	PC.
072			961055-9	RETAINING RING S-15	1	PC.
100	1		654001-6	* TERMINAL R1.25-3.5	4	PC.
	2		654037-5	* TERMINAL R1.25-3.5	4	PC.
101			654069-2	* RECEPTACLE (Removed after Feb 2014 production)	1	PC.
102			652008-6	PAN HEAD SCREW M3.5X7	4	PC.
C01			872354-3	CARTON F/5007FK	1	PC.
C01			876430-5	CARTON F/5007F	1	PC.

ACCESSORIES

- See catalogue or visit www.makita.ca for more accessories information -

A01			164095-8	GUIDE RULE (5007FK)	1	PC.
A02			D-35352-10	7-1/4" CT SAW BLADE 24T 5/8", 10/PK	1	PC.
			A-94530-10	7-1/4" FRAMING BLADE, 24T, 10PC/PK	1	PC.
A03			782016-4	OFFSET WRENCH 13	1	PC.
A04			824473-1	PLASTIC CARRYING CASE (5007FK)	1	PC.
		INC.	417059-4	LATCH	2	PC.
		INC.	418889-6	HANDLE	1	PC.
A05			199711-3	DUST NOZZLE SET	1	PC.
		INC.	272243-5	LEVER 36	1	PC.
		INC.	911223-4	PH SCREW M5X16 W/WR	1	PC.

SERVICE CHANGES

1. Changes on Tension Spring 4

(TI#A3885)

Item No.	Description	Type 1	Type2
026	Tension spring 4	231828-7	231888-9

Type 1



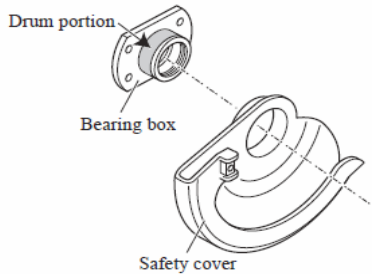
Spring pulling force: 4.0N

Type 2



Spring pulling force: 4.9N

Note: When replacing Tension spring 4, apply 0.05ml of Lubricant VG46 on Drum portion of Bearing box where Safety cover pivots as illustrated below.



2. Changes on Motor Housing etc.

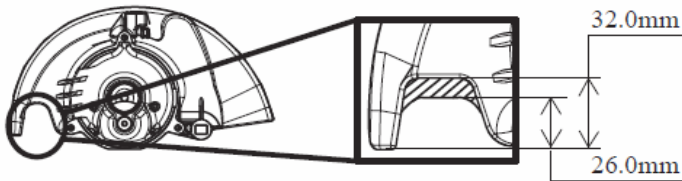
(TI#A2015)

Item No.	Description	Type 1	Type2	Fig #
033	BLADE CASE COMPLETE	153436-3	142465-1	1), 2)
012	MOTOR HOUSING COMPLETE	152989-9	142466-9	3)
019	HANDLE COVER	417712-2	454973-3	4)
066	FRAME	417468-7		
005	FIELD ASS'Y 115V	590010-0	596396-0	
067	LIGHT CIRCUIT	631453-8	631709-9	
068	SWITCH SLE6A	651514-8		
101	RECEPTACLE	654069-2		
015	CORD GUARD 10-90	682505-8	682574-9	
100	TERMINAL R1.25-3.5	654001-6	654037-5	5)

↑
Interchangeable
as a set
↓

Fig. 1)

Change of Blade case complete



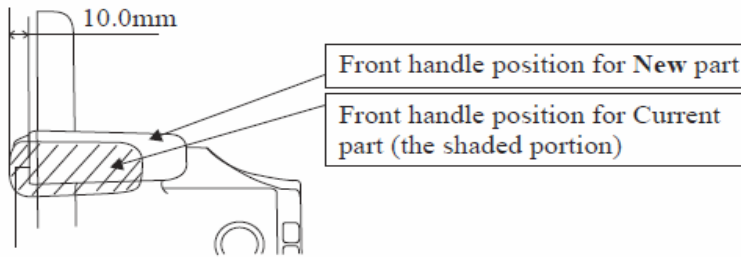
Height of opening to see blade tip has been reduced from 32.0mm to 26.0mm.

Fig. 2 Change of Indication label

	Current	New
Design		
Pasting position		

Fig. 3)

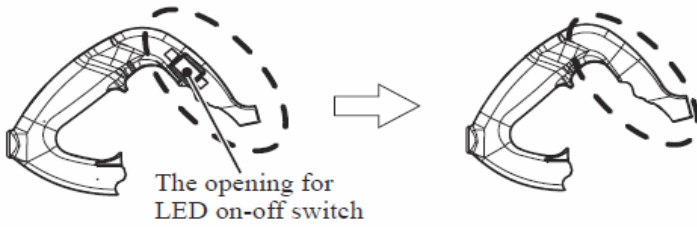
ange of Motor housing complete



Front handle of Motor housing complete has been repositioned 10.0mm apart from the blade.

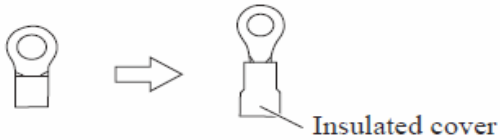
Fig. 4)

Change of Handle cover (for 5007F, 5007FA)



The opening for LED on-off switch on Handle cover has been eliminated. The shape of Handle cover has been also changed due to the change of Motor housing complete.

Fig. 5) Change of Terminal



Wiring Diagram : See TI#A2015